

Marula Mining PLC

(AQUIS:MARU)

(A2X:MAR)

AQUIS Showcase Day 2024





Marula Mining Plc

“Driving sustainable resource development with critical metal assets across Africa.”



- Diverse High-Value and Risk-Balanced Mine Portfolio
- Strategic African and Critical Battery Metals Focus
- Multi-Commodity and Multi-Jurisdiction
- Sustainability Commitment to Development
- Accelerated Product Delivery to International markets

Our Battery Metals Projects

- Lithium
- Copper
- Graphite
- Cobalt
- Manganese

Accelerate To Production and Profits

- Experienced Management
- Strong Local Partners
- Proven Mining Environment
- Stakeholder Engagement
- Access to International Markets

**BLESBERG LITHIUM AND
TANTALUM MINE**



**KINUSI COPPER AND GOLD
MINE**



**LARISORO MANGANESE
MINE**



**NYORINYORI AND
NYORIGREEN GRAPHITE**



**KILIFI MANGANESE
PROCESSING OPERATIONS**



**NORTHERN CAPE LITHIUM
AND TUNGSTEN**



Operating Mines

“From Minerals to Manufacturing - Capturing the Full Value Chain.”

01

Blesberg Lithium and Tantalum Mine

- Largest lithium pegmatite in South Africa
- Lithium sulphate processing plant
- Production of intermediate battery grade lithium
- Target initial sales of 2,000 tpa

02

Larisoro Manganese Mine

- Shallow open-pit mine in Kenya
- High-grade manganese ore of over 40%
- Target processing to high-value product
- Target initial sale of 120,000 tpa

03

Kinusi Copper and Gold Mine

- High-grade copper open-pit mine in Tanzania
- Copper grades of over 30%
- Production of concentrate and copper cathode
- Target initial sales of +10,000 tpa of copper cathode

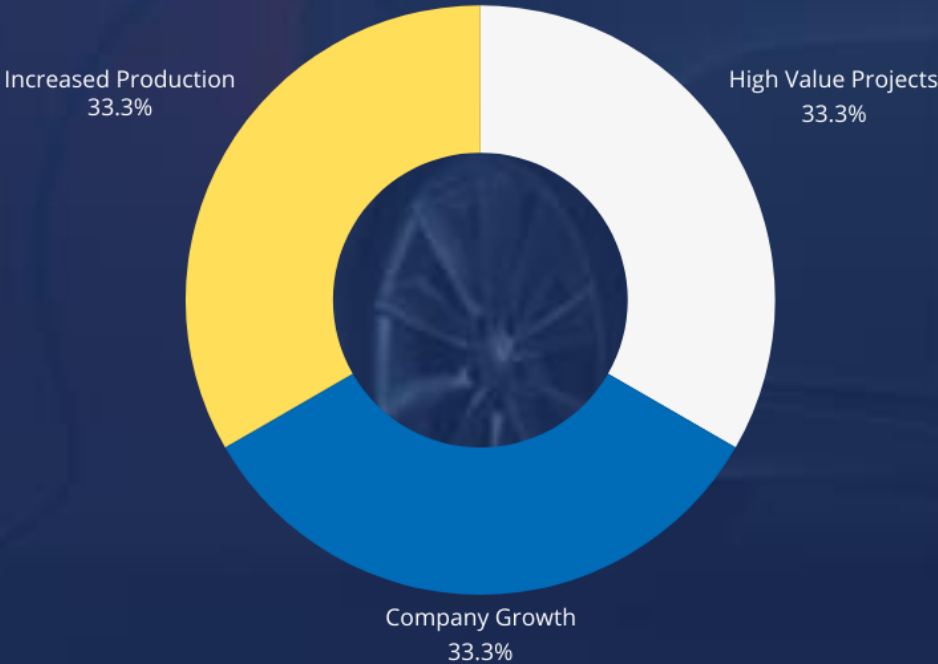
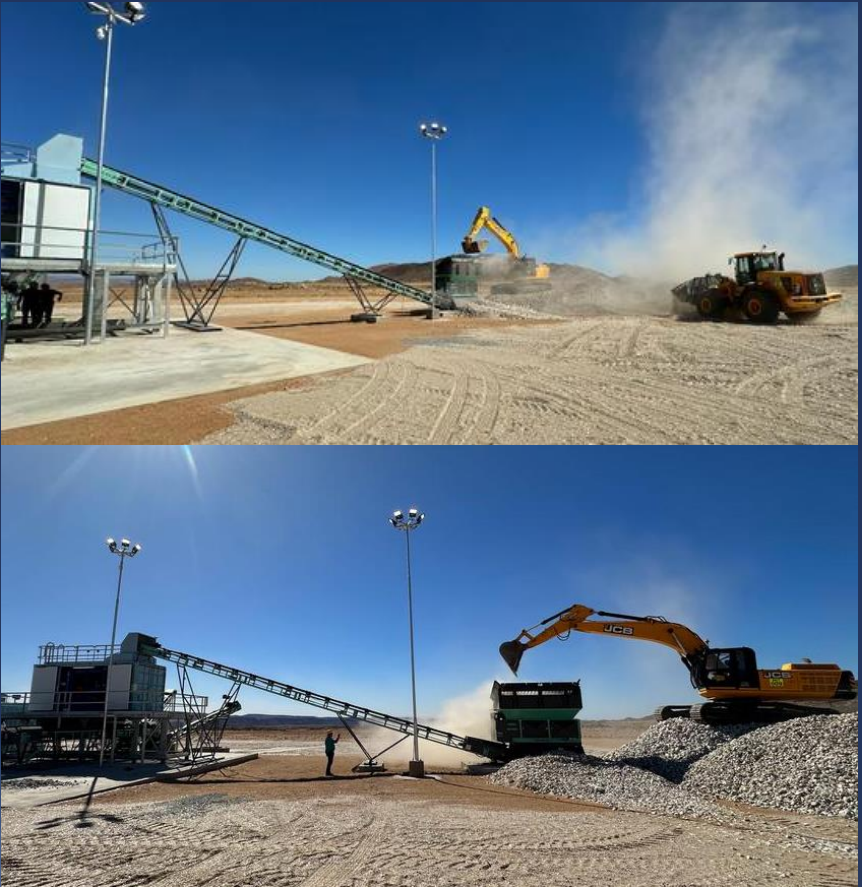
04

Kilifi Manganese Operations

- Manganese processing operations in Kenya
- Sales of a medium grade manganese product
- Target processing to a battery high grade product
- Target initial sales of +200,000 tpa

A Sustainable and Profitable Investment Opportunity

Market Cap £11.43M	Tradable Securities 217.6M	Share Price Year High 13.75P
-------------------------------------	---	---



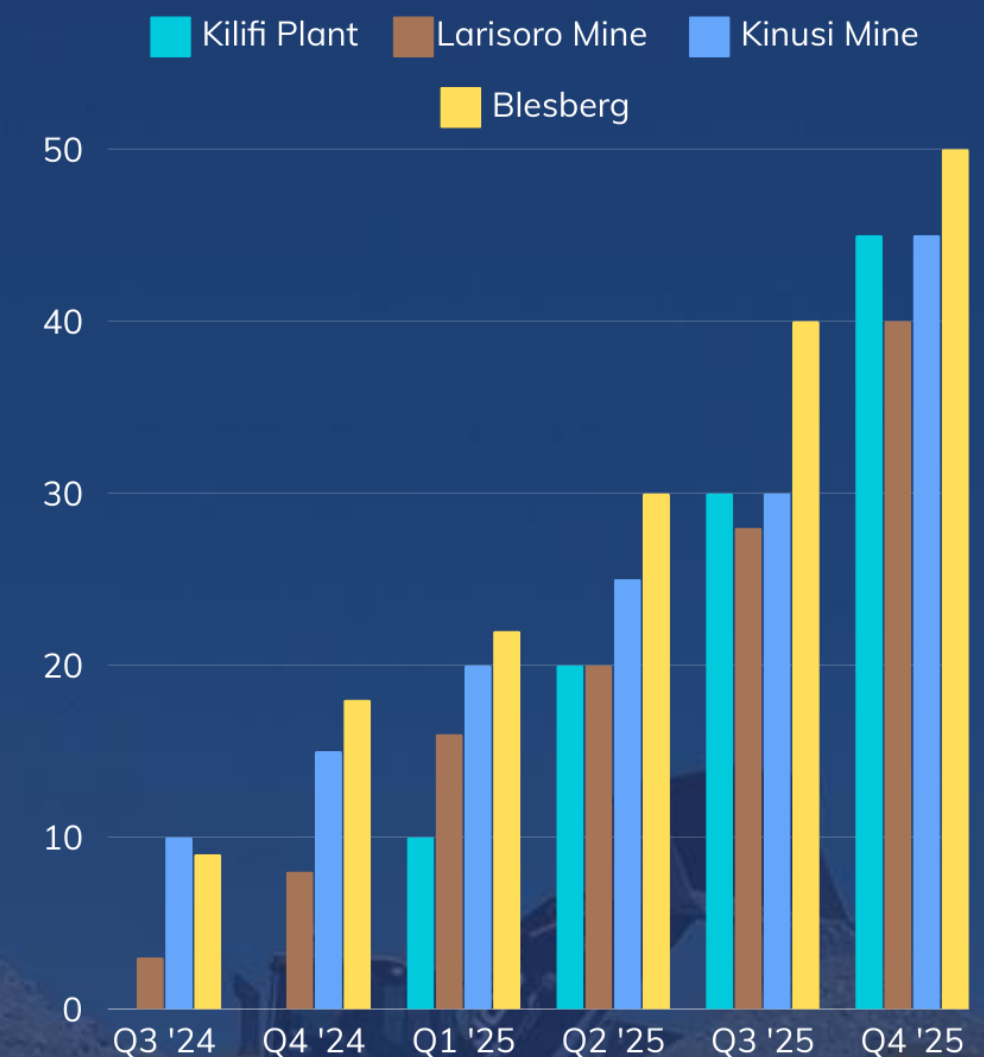
DIVIDEND POLICY
LISTING MILESTONES
STRATEGIC PARTNERSHIPS
REVENUE AND SALES PROJECTIONS

Marula is positioned for significant growth over 2025, with production and sales on an upward trajectory and new projects accelerated to production

And so... The Future

Growth and increased sales expected from all our current mining operations

- Increased Production and Sales Across the Mines
- Value Addition at all Key Operations Management
- Battery Lithium Product and Copper Cathode
- High Value Manganese Ores and Battery Material
- New Mine Development in Sales of Other Key Critical Battery Metals
- Tantalum, Tungsten, Tin, Rare Earth Elements



Sustainability and Community Impact

LOCAL ENGAGEMENT / SUSTAINABLE PRACTICES

- Collaborates with local groups to promote sustainable practices and ensure community benefits

COMMUNITY PARTNERSHIPS

- Investment in community-based initiatives through Mayflower Children's Foundation

ECONOMIC EMPOWERMENT

- Prioritise local employment to drive economic development
- Prioritize sustainable practices and responsible mining, reducing environmental impact through partnerships and local collaboration



Thank you!

Join Marula Mining on its journey to power the future and
generate sustainable value

Connect with us!



Mail

info@marulamining.com



Website

www.marulamining.com

Scan for more:

